

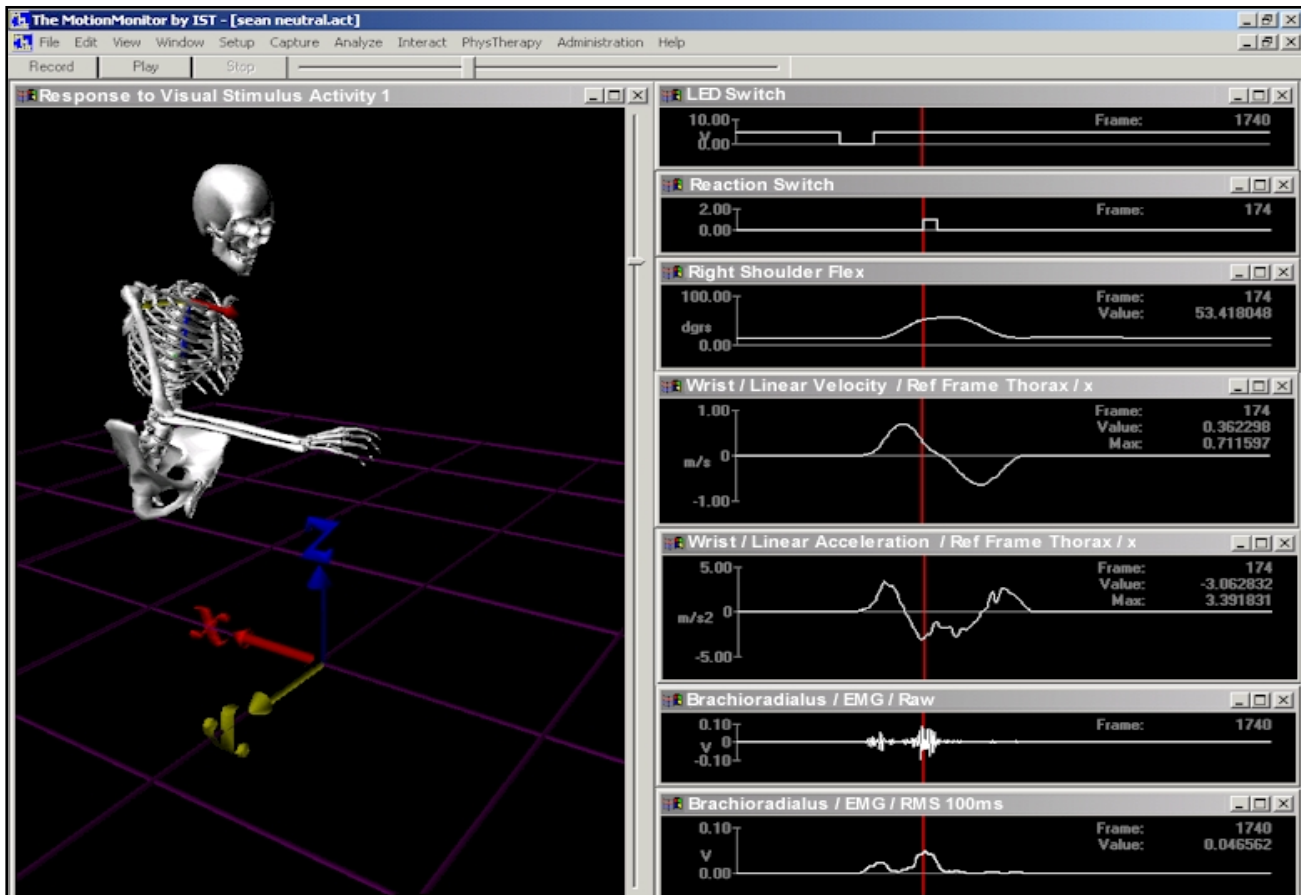


The MotionMonitor base unit shown here with Ascension magnetic trackers, Extended Range Transmitter and Bertec non-conductive forceplates.

the most advanced data acquisition and analysis system in the market place offers precise measurement of human motion for applications in...

Motor Control

- Generate visual, audio, and tactile “stimulus” signals using 2D or 3D visualization.
- Mark time between events of interest using pressure and light switches.
- Track the occurrence and timing of EMG response.
- Monitor kinematic response with graphs of segment trajectories together with their linear and angular velocities and accelerations, computing values relative to any reference frame.
- Automatic synchronization of all data collected during the trial.
- Automatic alignment across subjects and trials.



This image displays the EMG and kinematic response to visual stimuli in the form of an LED light switch. When the switch was activated as indicated in the first graph, the subject reached to activate a pressure switch as shown in the second graph. Shoulder flexion, hand velocity / acceleration and EMG data are plotted in the remaining graphs.



...The Total Solution in Motion Capture®

Real time **data** acquisition, analysis, and 3D visualization.
Turnkey **hardware** solutions. Upgradeable as your needs change.
Research Design & System Engineering **consultation**.

The MotionMonitor™ is a trademark of Innovative Sports Training, Inc.

Innovative Sports Training, Inc. • 3711 North Ravenswood Avenue • Chicago, Illinois 60613 USA
www.innsport.com Telephone: 773.244.6470 email: support@innsport.com