

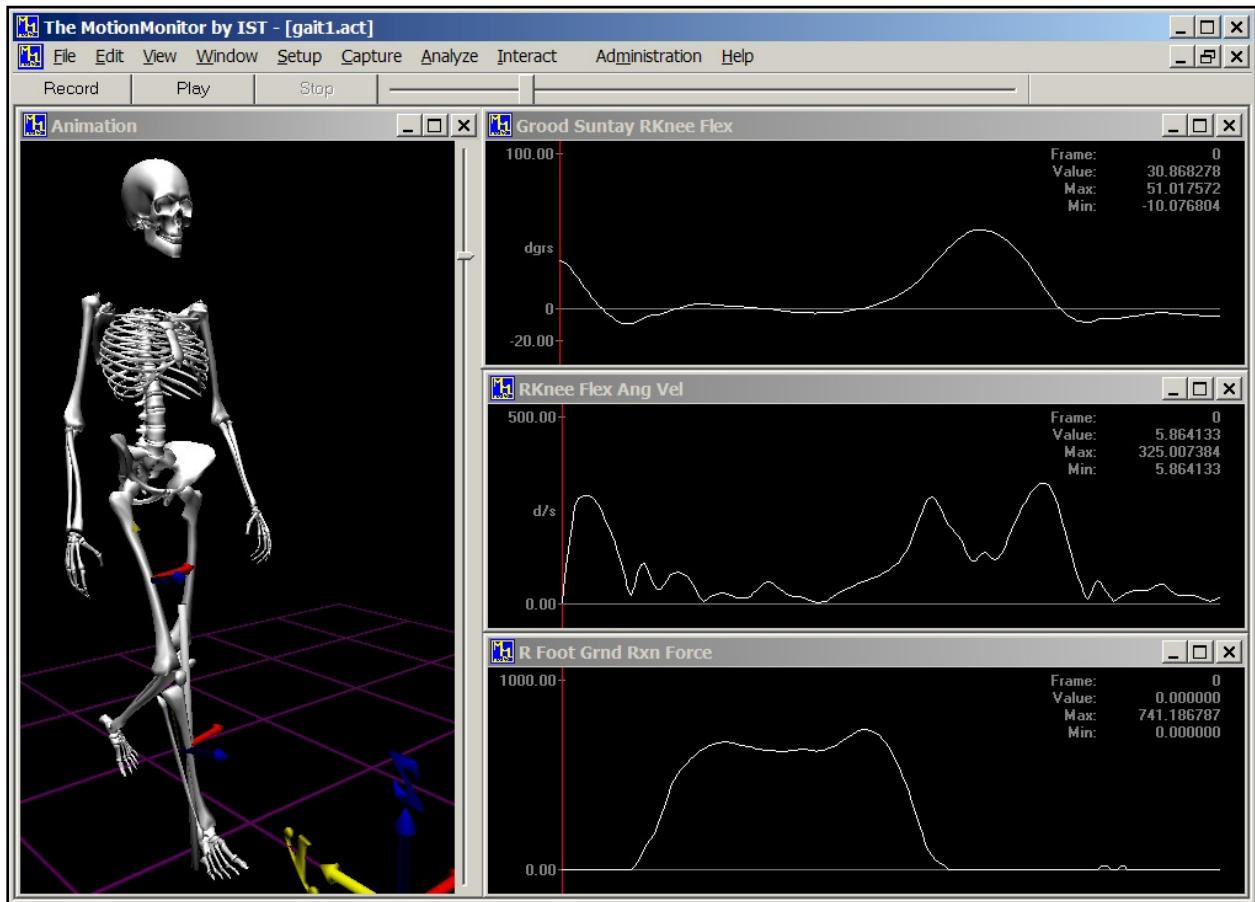


The MotionMonitor base unit shown here with Ascension magnetic trackers, Extended Range Transmitter and Bertec non-conductive forceplates.

the most advanced data acquisition and analysis system in the market place offers precise measurement of human motion for applications in...

Gait Analysis

- Perform real-time data collection with no post-processing.
- Use pre-defined 6 degree of freedom rigid bodies for fast, easy and accurate set-up.
- Define virtual joint centers using Bell, Davis or Leardini methods or from user defined anatomical landmarks.
- Output all kinematic data including joint moments and forces using simple drop-down menus.
- Trigger data collection with forceplate impact or foot switches for hands-free collection.
- Normalize data by body weight, height, percentage of gait cycle, and stride length.
- Automatically ensemble average output data. Display with standard deviations and/or scatter plots.
- Create user parameterized databases for comparative analysis of subject data.



Above is an image showing the results of selecting some common lower extremity variables for a gait activity. The graphs display the Grood and Suntay angle for right knee flexion, right knee flexion angular velocity and the ground reaction force on the right foot.



...The Total Solution in Motion Capture®

Real time **data** acquisition, analysis, and 3D visualization.
Turnkey **hardware** solutions. Upgradeable as your needs change.
Research Design & System Engineering **consultation**.

The MotionMonitor™ is a trademark of Innovative Sports Training, Inc

Innovative Sports Training, Inc. • 3711 North Ravenswood Avenue • Chicago, Illinois 60613 USA
www.innsport.com Telephone: 773.244.6470 email: support@innsport.com